

THE DIFFERENCE YOU MAKE

WHAT

Your donation helps United Way of Sheboygan County sustain vital social services that provides over 41,000 people with much-needed support. Thanks to you, United Way and our network of agencies are there 365 days a year.



WHERE



You support agencies and Community Impact Initiatives across Sheboygan County, providing people with crucial services close to home. Together, we address issues to meet local needs and ensure no one is left behind.



WHY

You love where you live and too many in our community are struggling. Many of our neighbors were pushed further into crisis by COVID-19.

Last year in Sheboygan County:

- 2-1-1 calls doubled as needs increased, with the highest call volume for: healthcare, housing, and mental health/addiction
- Unemployment increased, even hitting 13.9%, causing a ripple of financial effects for many who already struggled to make ends meet
- 300% increase in the need for essential mental health services

Your support means we can meet immediate needs and tackle systemic issues. Thanks to you, among many other things, we can:

- Provide vital mental health resources
- Set children up for success
- Ensure basic needs are accessible
- Help residents improve the well-being of their neighborhoods



HOW

We will continue to put your dollars to work in the community where they are needed most. We are committed to:

- Partner with local agencies, organizations, and government to meet local needs for short-term relief and long-term success
- Provide funding to programs at agencies that have measured results, are strong, sustainable and in good financial health
- Accountability and transparency, and welcome the opportunity to share information
- Strengthen the local social sector so our community is supported for years to come

OUR PROMISE TO YOU



United Way of
Sheboygan County

920-458-3425 | info@uwofsc.org | www.uwofsc.org



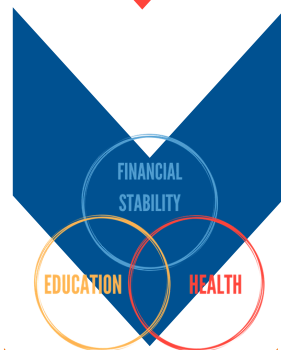
UNITED WE RISE

YOUR INVESTMENT AT WORK

Community Action Fund Donation



You give a gift to United Way of Sheboygan County's Community Action Fund to change the story for individuals and families.



Each year local programs focusing on education, health and financial stability apply for funding.



Volunteers review program applications and make funding decisions, holding each agency accountable for the funds used.



Funding is invested in 38 programs at 23 agencies and three community impact initiatives to meet community needs! All of the programs who receive funding are paid out monthly.

Partner Agency Donation



You give a gift to a United Way of Sheboygan County Partner Agency.



Your donation is designated to the agency and is paid out monthly. Each of our Partner Agencies are held to extremely high standards.

Other Nonprofit Organization Donation



You give a gift to a nonprofit agency that is not associated with United Way of Sheboygan County.



Your donation is paid to the agency bi-annually and your contribution helps to continue the good work they do.

THANK YOU FOR MAKING A DIFFERENCE IN THE LIVES OF OTHERS!



United Way of
Sheboygan County

920-458-3425 | info@uwofsc.org | www.uwofsc.org

UNITED WE RISE

